

Wisconsin Heights School District Operational Planning

October 26, 2020

Dane County Public Health Updates



1. Public Health Madison & Dane County - [Emergency Order #9](#)
 - Last updated on September 1
2. Public Health Madison & Dane County - [Opening Metrics](#)
3. [Current Dane County Snapshot](#) - updated 10/22/20
 - a. Contact tracing, incidence & community spread in red
 - b. 14-day case avg is 167

Decision Making Framework



- Public Health Madison and Dane County (PHMDC) guidelines
 - What are they recommending for county schools?
- Local census tract data
 - What do case counts look like in Mazomanie and Black Earth? How does this compare when calculated in a per 100,000 basis?
- Our lived experience in nearly two months of our enhanced online model - including staff capacity
 - Are protocols, procedures, and people holding up with our present number of students in-house and online?

Public Health Dane County Statement



As shown in our school metrics table, in-person school reopening recommendations are different from in-person school closure recommendations. At this time, if Dane County surpasses 54 cases over a 14-day average, PHMDC will review data and make a determination of whether a county-wide closure of in person classes is recommended (if schools are required to be closed this will be determined by DHS). This will be based on several factors, including but not limited to:

- Number and trend of positive cases
- Extent of exposure
- Contact tracing capacity

Source: <https://www.publichealthmdc.com/coronavirus/data>

Public Health Dane County Statement



While we're currently seeing concerning data trends in Dane County and throughout the state, including increased community spread and increased hospitalizations, we are not seeing strong connections to in-person school environments. It's important to note that many Dane County schools only have K-2 open for in-person instruction at this time and are reopening schools in a phased manner, per PHMDC's recommendation. Starting with grades K-2 is a way to carefully minimize risk of exposure that is supported by science and starts getting youth back to in-person learning. We will continue to monitor for clusters in schools, but based on this current data, **PHMDC is still supportive of allowing K-2 in-person at this time.**

Source: <https://www.publichealthmdc.com/coronavirus/data>



Dane County Delivery Models

- As reported on Friday, October 23 (PHMDC and superintendents Zoom meeting.)
 - McFarland - EC through second grade in hybrid model
 - Sun Prairie - EC through second grade hybrid - scheduled to start December 7
 - Middleton - studying K-2 half day model
 - Marshall - K through two in blended model
 - Monona Grove - K through second grade hybrid - scheduled for January 25
 - Lodi - Online with support hubs
 - Madison - Online at least through end of second quarter
 - New Glarus - 4K through 12th grade in blended model
 - Belleville - PK through second grade in hybrid model
 - Deerfield - 4K - through second grade hybrid - scheduled for November 9
 - Verona - K through second grade in hybrid model
 - Stoughton - K through second grade hybrid - targeting November 16
 - Oregon - K through second grade in hybrid model
 - Columbus - 4K through fifth grade, four days in-person, sixth through 12th grade blended



Dane County Delivery Models

- As reported at a previous October meeting (PHMDC and superintendents Zoom meeting.)
 - DeForest - EC through second grade in hybrid model
 - Cambridge - K through fifth grade full in-person
 - Waunakee - K through fourth grade in hybrid model, HS labs

Feedback Summary:

- Ten schools providing at least hybrid/blended for 4K through second grade students
- Four schools with dates for targeted implementation for hybrid/blended for 4K through second grade students
- Three schools with no set date for implementation - still fully online

The Plan - as approved on July 27, 2020



- We will start on September 1, 2020 in an Enhanced Online Environment PK-12 grade.
- This will be our delivery method through at least November 4, 2020 (end of the first academic quarter).
- Enhanced = refined online learning experience and in-person services provided for specific populations by invite (special services).

What does turning the dial look like?



- October 5, 2020 - 86 students in-person
- October 12, 2020 - 123 students in-person (includes 31 students in the 4K hybrid program)
- October 13, 2020 - 168 students in-person (includes 45 students in HS lab offerings)

Proposal for the start of Quarter 2



- Our enhanced online learning model will continue to serve as our primary instructional delivery method (grades 3 - 12)
- The dial will continue to turn based on three factors
 - Public Health Madison and Dane County (PHMDC) guidelines
 - Local census tract data
 - Our lived experience in our enhanced online model - including staff capacity
- Targeting November 16, 2020 for K-2 hybrid at BE
- Evaluation window = approximately three weeks

Face Coverings



- In-person learning participants are required to wear a face covering as per district expectations
- Schools will accommodate student with health conditions or 504/IDEA requirements (as per Boardman and Clark)
- Enforcement is similar to school dress code procedures (as per Boardman and Clark)



Black Earth Hybrid 4K Update

- First day of hybrid model was on Monday, October 12.
- 31 students total
 - Group A (Mon/Tues) AM - 11 students
 - Kurtz - 6
 - Updike - 5
 - Group A (Mon/Tues) PM - 4 students
 - Updike - 4
 - Group B (Thurs/Fri) AM - 11 students
 - Kurtz - 5
 - Updike - 6
 - Group B (Thurs/Fri) PM - 5 students
 - Updike - 5



Black Earth Hybrid 4K Update

- Teachers and EA staff are very diligent to remind students about adjusting face coverings and keeping their distance.
- Students are doing their best to maintain social distance with one another.
- Hand washing and sanitizing is expected several times during their time in class.
- Activities/materials are organized so students are using the same materials for the days they are school.
 - Materials kept in a plastic bin with a lid.
 - Then they are sanitized.
- Playground times and locations will need to be scheduled to accommodate 4K, Early Childhood, and Lifecycle Kids school age students & Wrap-Around Care.

Black Earth Hybrid Kindergarten-2nd Grade



- First day of hybrid model will be on Monday, November 16.
- Model:
 - Monday-Friday
 - Group A | 8:00-11:00 AM
 - Group B | 12:15-3:15 PM
 - When students are not in school, there will be minimal expectations for additional work. For example; students may have a skill reinforcement activity in math/reading, writing, spelling word work, play a skill reinforcement game on the computer, or simply read for pleasure.
- Maintenance
 - Sanitizing will occur when students are not in the building.
 - Lockers, hooks, student seats, student desks/tables.
- Related Arts Tentative Plan (still planning with related arts teachers)
 - Both student cohorts will have 30 minutes of related arts.
 - Students will have the same course for an entire week.

Black Earth Hybrid Kindergarten-2nd Grade



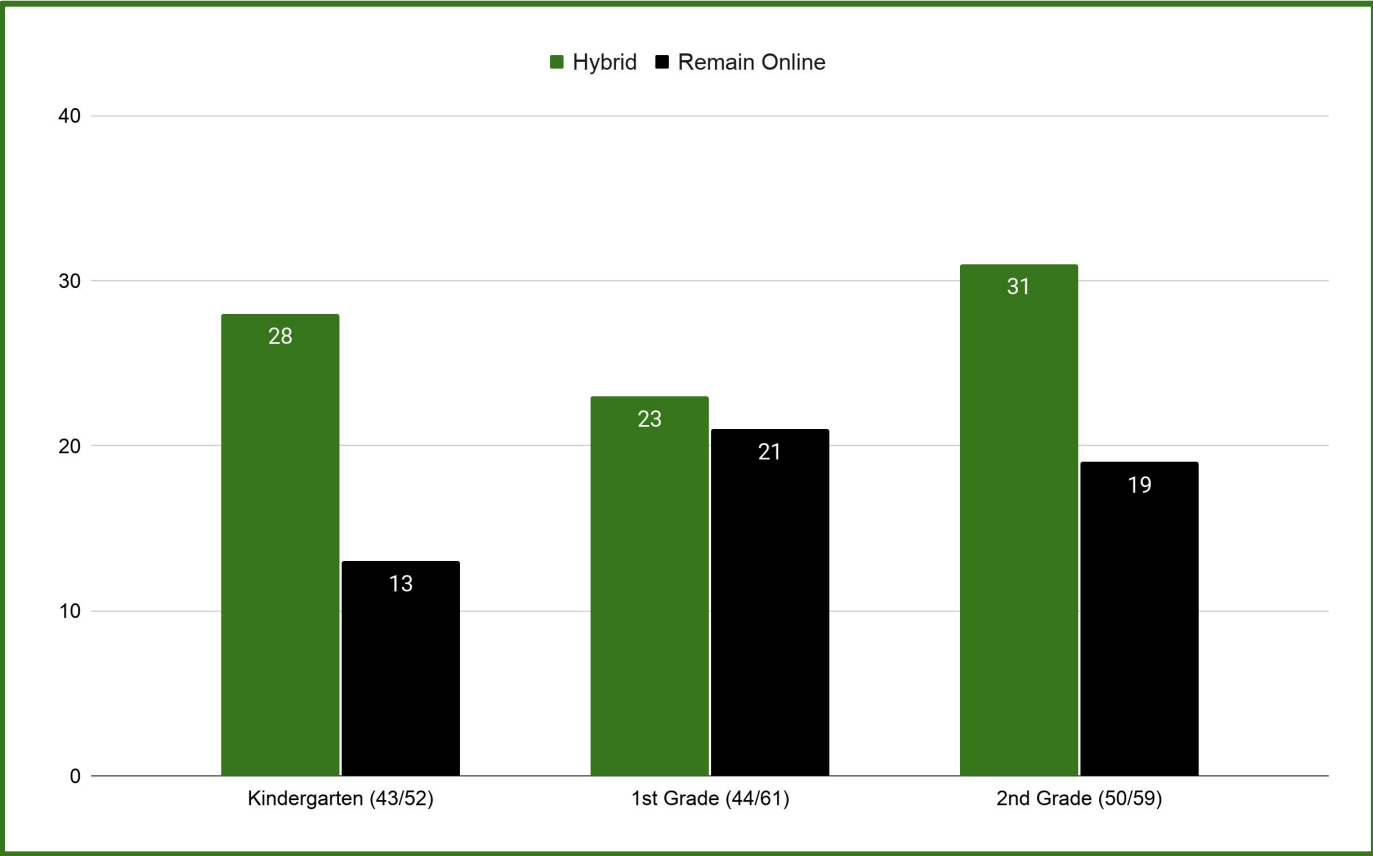
- Transportation
 - Transportation will be available for pick-up and drop-off.
 - For consistency, we ask that students are picked-up/dropped-off at the same location each day.
- Online students
 - Instruction will be delivered in a similar format that it is currently.
 - Materials will need to be picked up (update to come).

Black Earth Hybrid Kindergarten-2nd Grade



- Survey went out on Monday, October 19 to all Kindergarten-2nd grade families via Skyward message center.
- Asked the following questions:
 - Child's name.
 - Child's teacher.
 - I will be sending my child to {grade level} in a hybrid model starting Monday, November 16, 2020.
 - My child will need transportation to and from school.
 - If your child needs transportation, please indicate the pick-up/drop-off address below. If your child is going to remain in the online model simply write "not riding" for your answer.
- Survey will close on Monday, November 2.
- Parent Q&A via Zoom on Thursday, October 29, 2020 at 5:00 PM.
- Results:
 - 125/172 or 73% have responded as of 10/26/2020 at 12:30 PM.

Black Earth Hybrid Survey Results to Date



Studio/Lab at WHHS



Parameters:

- Targeting classes that have a hands-on component that is hard to replicate online.
- Ensuring safety of students and teachers.
- Recognizing the time limits of students and staff.
- Flexing the “online” schedule to accommodate in-person learning.
- Minimizing the “living in two worlds” impact.

Data -- 10/13, 10/20



Attendance at in-person studio learning				
Date/Class	Wellness (N=12)	Lifetime Sports (N=23)	Wildlife Management (N=18)	Metals Fabrication (N=8)
10/13	4	11	13	6
10/20	5	7	13	5

Ongoing evaluation/planning



- Attendance
- Capacity -- student and adult
- Flexibility -- student and adult
- Transportation needs
- Risk

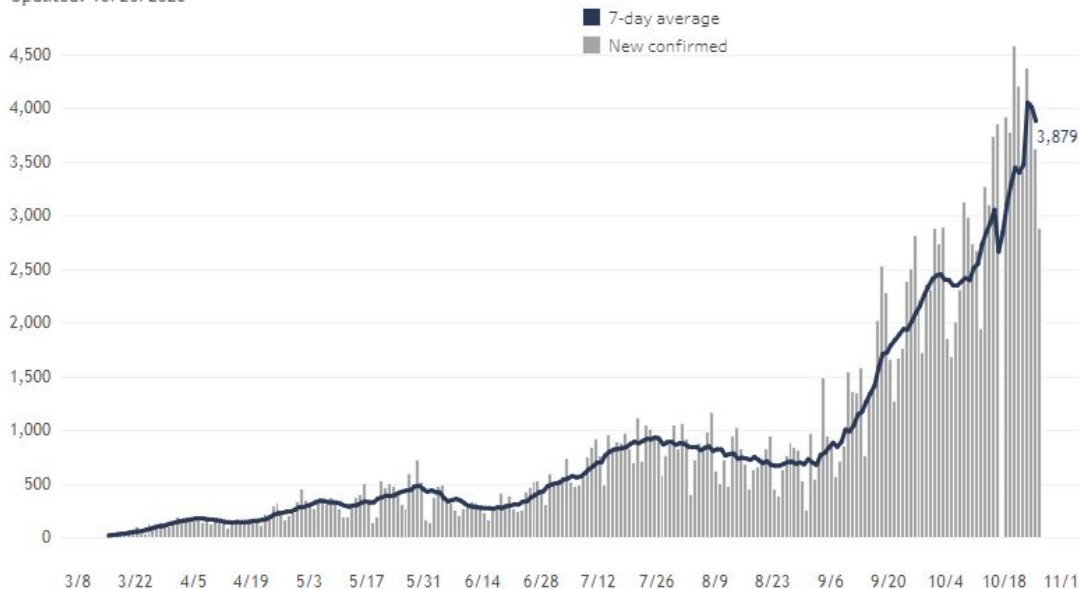
WI Data



#3 spot in the US on the [Harvard Global Health Institute Dashboard](#)

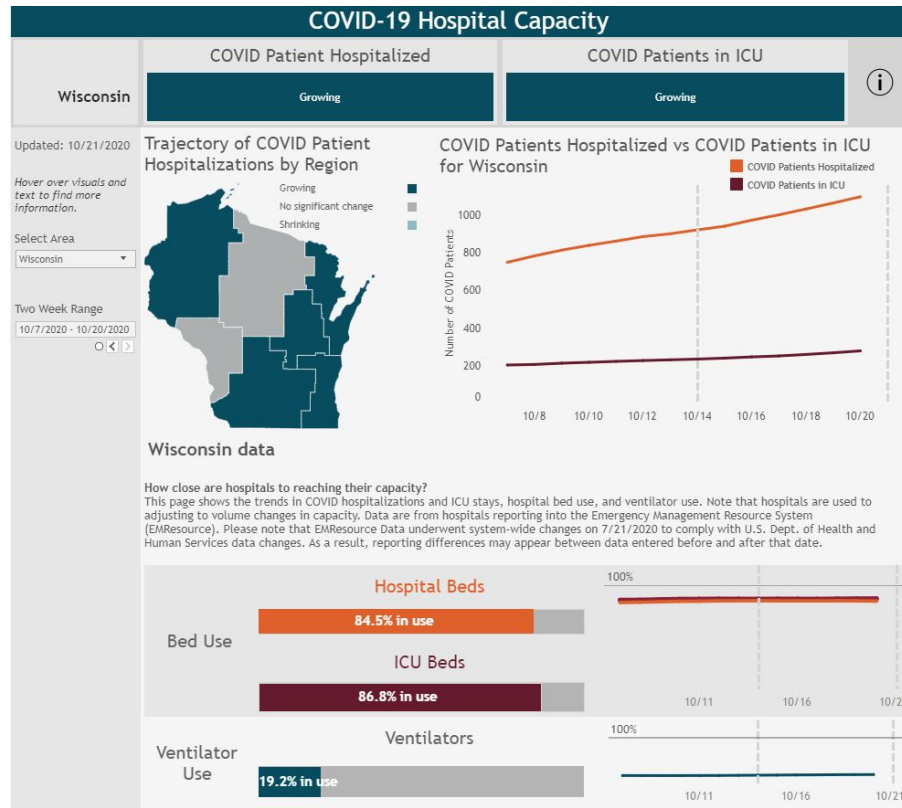
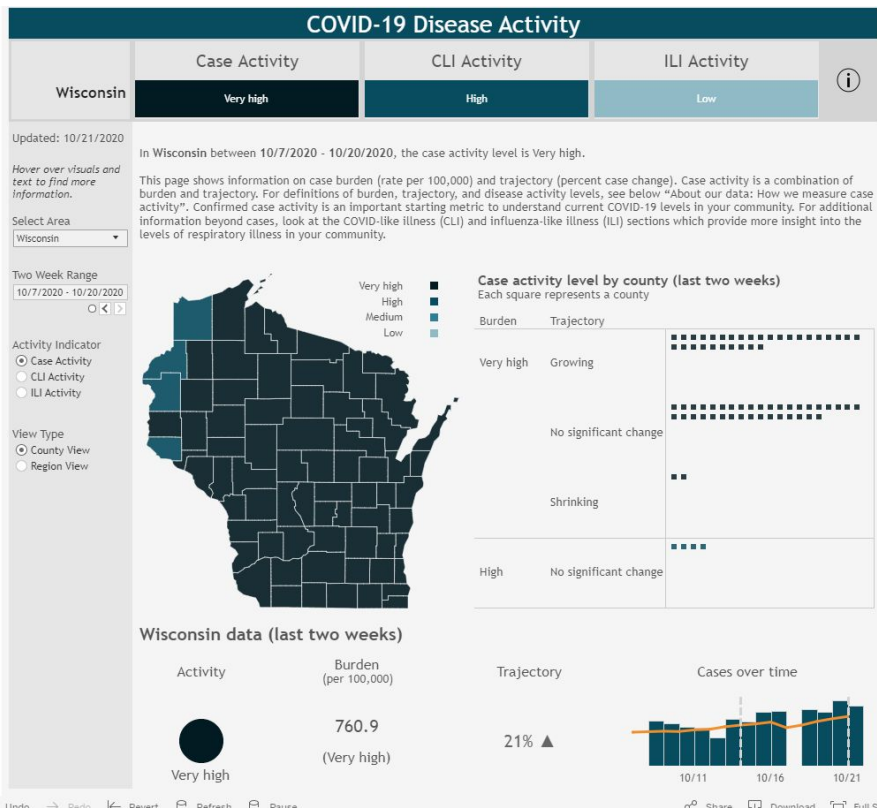
New confirmed COVID-19 cases by date confirmed, and 7-day average

Updated: 10/26/2020



	14 day Average Case count	14 day Average % Positive
July 26	886	7.34%
Sept 28	1974	18.14%
Oct 12	2472	19.1%
Today	3490	25.4%

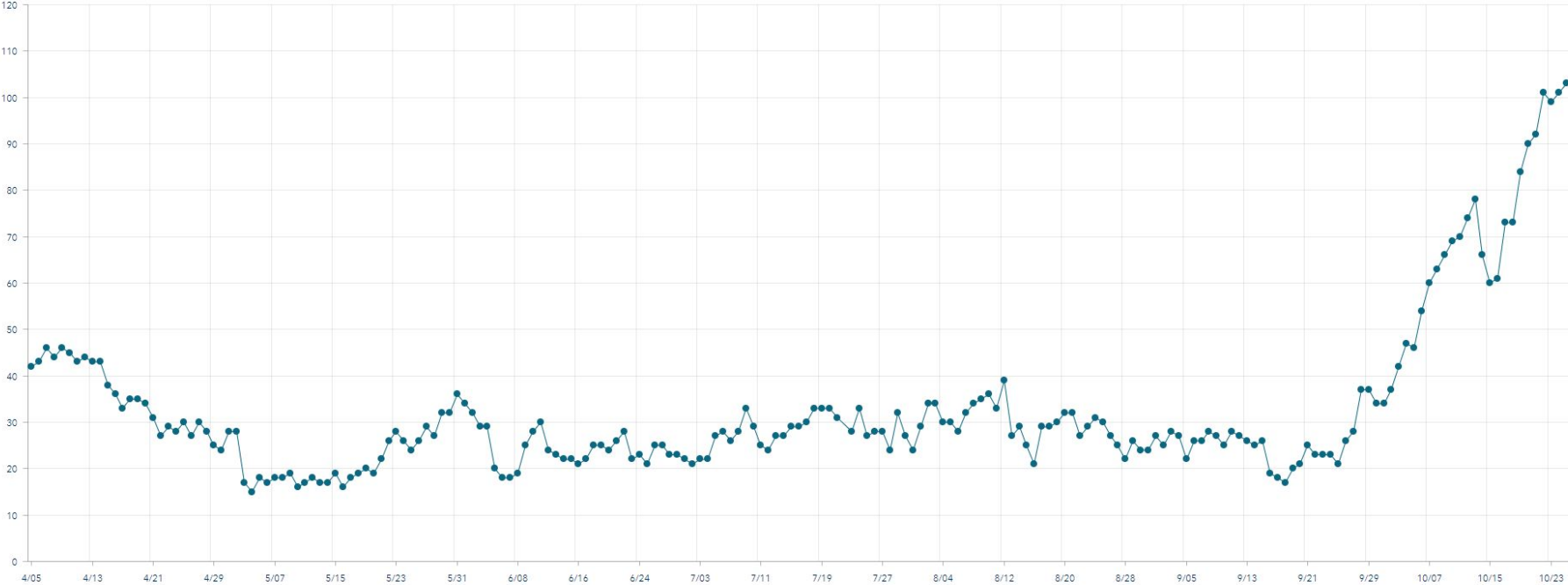
WI Data - New State Website



Dane County Data



Current COVID-19 Inpatients



Data source: EMResource. EMResource is a tool that hospitals use to share information about hospital resources with agencies involved in emergency response planning, such as public health. Note that these data could include COVID-19 patients who are not Dane County residents, as hospitals located in Dane County may serve individuals who live in other counties, states, or countries.

Dane County Data



Switched to Crisis Model for contact tracing

Domain	Measure	Dane County Status
Epidemiology: We must have few enough cases of COVID-19 to be swiftly contained. This is an important parameter, and our thresholds for phased reopening are set at levels that align with the progression of our epidemic locally—a lower positivity rate than what is seen at the state level and a low number of cases per 100,000 residents. For the past 2 weeks, Dane County has a very high activity level.	1. Below a threshold of 5% for positive tests as a percent of total tests averaged across most recent 14 day period	3.9%
	2. Below a low incidence threshold of 0.71 new cases per 100,000 people per day (this is below 4 cases per day for Dane County)	167
Healthcare: A sustained, high testing level is a critical metric, as testing is how we detect active infection and prevent transmission of COVID-19. Alongside testing to monitor the course of the epidemic, it is vital that healthcare systems are equipped to manage patient care in the context of a surge caused by COVID-19 as well as protect healthcare workers from infection. Metrics 4 and 5 not available due to changes in reporting from health systems. We are researching other ways to assess measurements of hospital function.	3. Testing supplies and staff facilitate adequate testing for disease control and surveillance (goal of over 800 per day for Dane County)	4291
	4. Percent of hospitals reporting robust testing in place for healthcare workers in the past week	Not calculated this week, see note at left
	5. Percent of hospitals reporting ability to treat all cases without crisis care <ul style="list-style-type: none"> • Facility use • Staffing • Critical supply 	Not calculated this week, see note at left
	6. Decreasing or stable numbers of infected healthcare workers	✔
	7. All positive cases be contacted quickly to facilitate rapid isolation and quarantine for disease control	36%
Public Health: Our ability to identify and isolate infections is critical to prevent further spread. Through rapid contact tracing, we can identify and notify contacts who have been exposed. Through education and isolation assistance, we can help keep people who test positive and their contacts separated from others for the duration of the infectious period, and lower the risk of spread in the community. Monitoring community spread—the percentage of cases with an unidentified risk factor—is how we can gain a sense of the scale of undetected disease spread.	8. Proportion of new cases over the most recent 14 day period who don't know where they could have gotten COVID	34%
	9. Downward or stable trajectory of COVID-like syndromic cases reported within a 14 days period	✔

	14 day Average Case count	14 day Average % Positive
July 26	58.7	3.13%
Sept 27	133 (w/o UW - 94)	3.7%
Oct 11	126.8 (w/o UW - 116.0)	3.3%
Today	190.2	4.8%

Black Earth & Mazomanie Data



	Sept 28	Oct 12	Today
Mazomanie	24	42	58
Black Earth	28	39	69
Total Cases	52	81	127
% Positive 14 Day Average	9.3%	22.4%	21.9%

36.2% of total cases
have happened in that
past 2 weeks

7 day average cases per 100,000



	Sept 28	Oct 12	Today
WI	37.2	42.6	57.0
Dane	21.7	23.2	33.5
BE/MZ	8.0	27.1	46.2

Athletics



- Offer girls and boys high school basketball
 - Modified practices -- shorten time, cohorts, partial weeks
 - Follow guidelines -- indoor max of 10, masks, social distancing, no lockers, etc.
 - Follow current open gym model
- Co-ops will follow guidelines set forth by host school
- Middle school sports will be postponed
- Dane County AD meeting with Public Health (11/2)

Athletics (continued)



- [UW Study](#) shows a low transmission of Covid in sports
- Out of 30,000 student athletes, there was one case that was traced to sports
- 30% of the cases had an unknown source
- Case rate was lower among student athletes (901 cases per 100,000) than 14-17 year old non-athletes (1035 per 100,000)
- Dane County Guidelines remain unchanged

Pupil Services Mental Health Support



Every quarter, Pupil Services will be checking in with students and/or parents about students' mental health via an electronic survey.

Elementary Example:

1. Would you like your child to meet with Mrs. Martin for individual counseling? (via Zoom)
2. If you answered "yes" or "maybe" indicate your reason(s).
3. Would you like your child to meet with Mrs. Martin in a small group? (via Zoom) Mrs. Martin would speak with parent/guardians with details before groups begin.
4. Would you like your child to participate in Mrs. Martin's Classroom Guidance lessons? (as a "guest" in their classroom Zooms).
5. If you answered "yes" or "maybe" indicate your interests. Potential topics include Kids Yoga, Pet Therapy, Social Emotional Learning via Second Step, or feasible popular requests.
6. Would you be interested in Mrs. Martin "Office Hours" for drop ins for mental health?
7. Optional: Anything else you would like me to know?

Food Service



- **Meals served to date: 4,008 breakfasts and 4,393 lunches**
- On October 9, USDA extended nationwide waivers to continue the use of the National School Lunch Seamless Summer Option (SSO) through June 30, 2021
 - Allow school food authorities to continue serving free meals to all students

What's Next?



Ongoing

- Professional staff members utilizing Schoology as our district LMS.
 - WHSD staff communicates with families/students regarding grade/class level learning plans.
1. Ongoing - Feedback cycles with parents, students, families & staff.
 2. October 26, 2020 - School Board Meeting - share updates on implementation of 4K hybrid and HS labs. Approval of November plans.
 3. November 9, 2020 - School Board Meeting - share updates on implementation of 4K hybrid and HS labs. Also update on K-2 planning.
 4. November 16, 2020 - targeted implementation of kindergarten, first and second grade hybrid learning model.
 5. November 23, 2020 - BOE decide on winter sports programming if it will be beyond context of PHMDC recommendations.
 6. November, 2020 and beyond - continue to evaluate three critical factors as we consider turning the dial (PHMDC, local census tract data, our lived experiences).