



Wisconsin Heights School District Operational Planning

April 26, 2021



Dane County Public Health Updates

1. Public Health Madison & Dane County - [Emergency Order #15](#)
 - Took effect **April 7, runs until May 5**

2. PHMDC School Guidance - Updated on March 2
 - a. [Forward Dane Plan - Updated](#)
 - b. [Action plan for a positive case](#)

3. [Current Dane County Snapshot](#) - updated **4/22/21**
 - a. In the past few weeks, Wisconsin is seeing more cases in individuals under 18 years old than any other age group.
 - b. Need to remain vigilant

Decision Making Framework



- Public Health Madison and Dane County (PHMDC) guidelines
 - What are they recommending for county schools?
- Local census tract data
 - What do case counts look like in Mazomanie and Black Earth? How does this compare when calculated on a per 100,000 basis?
- Our lived experience in our evolving instructional model - including staff capacity
 - Are protocols, procedures, and people holding up with our present number of students in-house and online?

Black Earth Updates



Planning Ahead:

- PALS assessments (in-person & online)
- SIPPS phonics screener (in-person & online)
- MAP assessment (in-person & online)
- Class placements for 2021-2022
- 2nd grade visit to Mazomanie Elementary
- Food for America
- Senior Walkthrough

Black Earth Updates



4K (46)	Kindergarten (49)	1st Grade (62)	2nd Grade (65)
<p>Online</p> <ul style="list-style-type: none">• 4 students <p>In-Person Classroom</p> <ul style="list-style-type: none">• AM 15 students <p>In-Person Classroom</p> <ul style="list-style-type: none">• AM 13 students• PM 14 students	<p>Online</p> <ul style="list-style-type: none">• 10 students <p>In-Person Classroom</p> <ul style="list-style-type: none">• 19 students <p>In-Person Classroom</p> <ul style="list-style-type: none">• 20 students	<p>Online</p> <ul style="list-style-type: none">• 14 students <p>In-Person Classroom</p> <ul style="list-style-type: none">• 17 students <p>In-Person Classroom</p> <ul style="list-style-type: none">• 16 students <p>In-Person Classroom</p> <ul style="list-style-type: none">• 15 students	<p>Online</p> <ul style="list-style-type: none">• 5 students & In-Person Classroom• 16 students <p>In-Person Classroom</p> <ul style="list-style-type: none">• 21 students <p>In-Person Classroom</p> <ul style="list-style-type: none">• 22 students

Mazomanie Elementary



Updates:

3rd Grade: 54 In-person -- 2 students online

4th Grade: 34 In-person -- 7 students online

5th Grade: 52 In-person -- 8 students online

***Forward testing currently in progress.**

Middle/High School -- Updates



- **Upcoming Events:**

- FORWARD testing grades 6, 7, and 8
- ACT ASPIRE testing grades 9 and 10
- AP Testing -- May 3-14
- Last day for Seniors -- May 21
- Elementary Walk and Graduation Practice -- May 27
- Senior Prom -- May 28
- Graduation -- May 31 at 1:00 pm (rain date May 30, 1:00 pm)



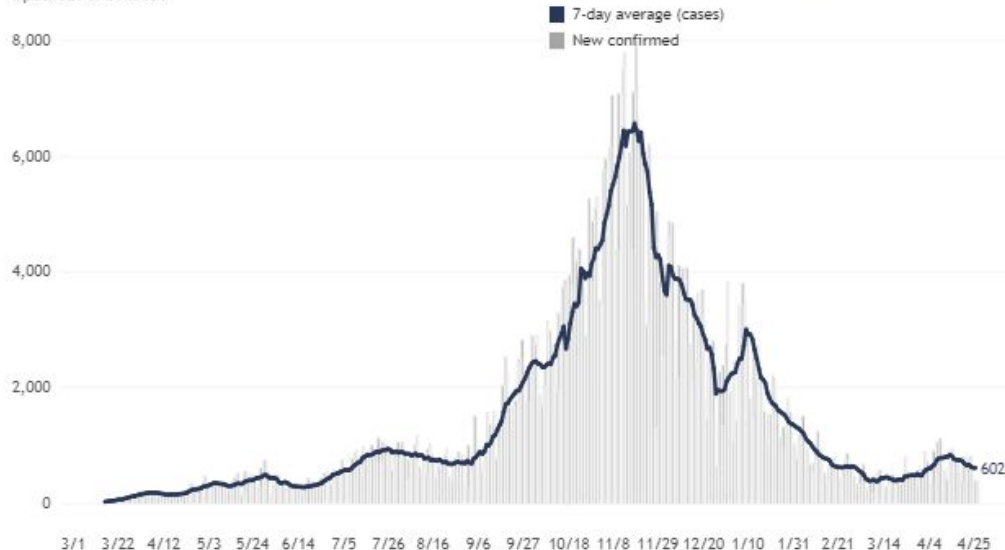
WI Data



#37 spot in the US on the [Harvard Global Health Institute Dashboard](#)

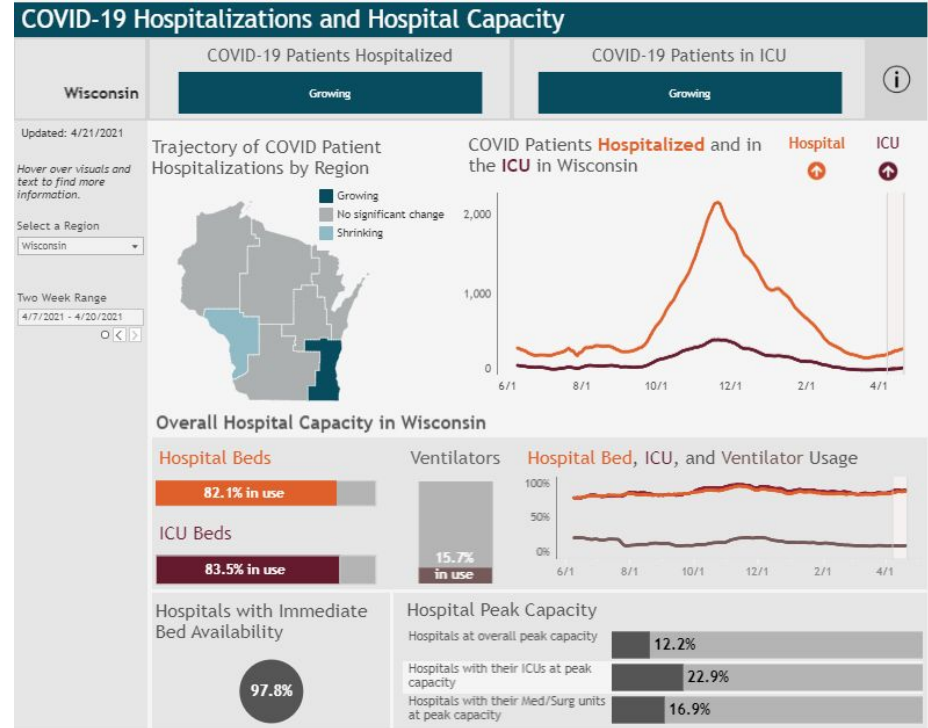
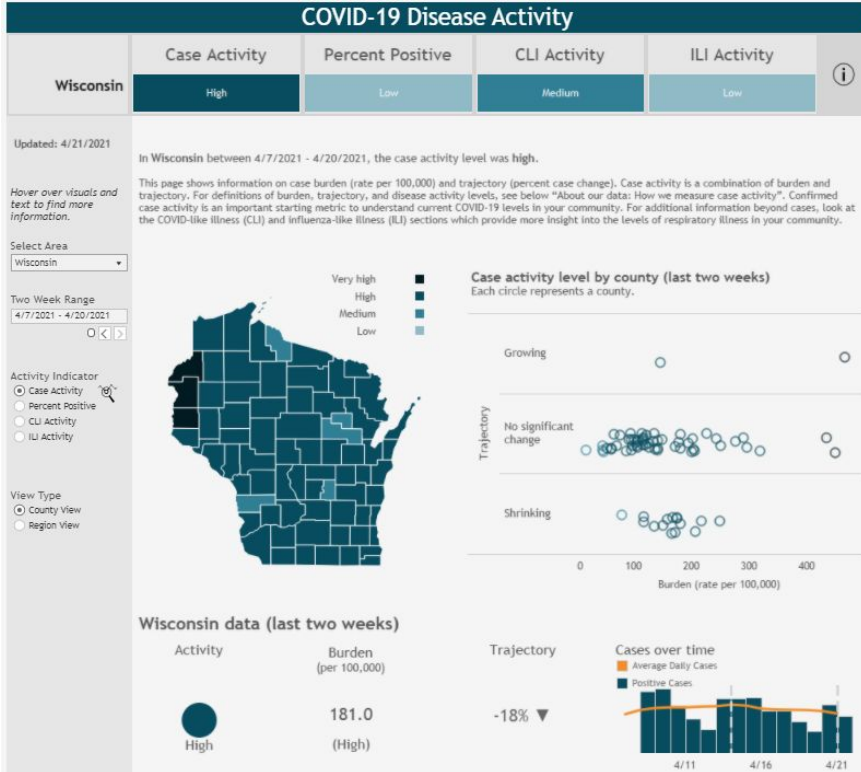
New confirmed COVID-19 cases by date confirmed, and 7-day average

Updated: 4/26/2021



	14 day Average Case count	14 day Average % Positive
Nov 23	6143	30.6%
March 22	421	2.5%
April 12	683	4.24%
April 26	667	3.8%

WI Data



Dane County Data



Domain	Measure	Dane County Status
Epidemiology: In addition to looking at vaccine measures, we will continue to look at disease burden and transmission in the community. For more information on the role of these measures, see our updated Forward Dane plan .	2-week average daily case count and trend	76 ↘
	2-week average daily percent positivity	1.2%
	2-week average daily COVID-19 inpatient hospitalizations and trend	31 ↗
	4-week total number of deaths and trend	3 →
	2-week lab and contact tracing capacity The percent of people who tested positive that were reached by a contact tracer within 48 hours of when their test specimen was collected.	71%
	Current infection rate (R)	0.98 Slowing down
Public Health: Monitoring both the lab timeliness component and the contact tracing timeliness component of the lab and contact tracing capacity epidemiology core measure helps us understand what may be causing a delay in timely follow-up for positive cases. Monitoring the outcome of attempting to interview cases (e.g., successful contact, refusal, or unable to locate) tells us how many people we're able to speak with to help break the chain of COVID transmission.	2-week percent of positive tests reported within 24 hours of when the test specimen was collected.	94%
	2-week percent of people who tested positive that were interviewed within 24 hours of when their positive test was reported.	67%
	2-week percent of people who tested positive who successfully received isolation instructions.	80%
	2-week percent of people who tested positive who refused an interview with our contact tracers.	3%
	2-week percent of people who tested positive who were unable to be located for an interview by our contact tracers.	18%

	14 day Average Case count	14 day Average % Positive
Nov 23	399.9	7.4%
March 22	47.1	0.67%
April 12	73.8	1.3%
April 26	62.7	1.1%

Black Earth & Mazomanie Data



	Nov 23	March 22	April 12	April 26
Census Tract 131	155	276	281	286
Census Tract 129	189	310	318	319
Total New Cases	127	17	13	6
% Positive 14 Day Average	31.8%	21.3%	13.2%	9.9%

Wisconsin Heights School District



	Dec 14	Jan 11	Feb 8	March 22	April 12	April 26
Total Cases	242	284	320	355	360	365
Total cases past 7 days	9	10	14	1	0	2

Population = 6,293 (all ages)

7 day average cases per 100,000



	Nov 23	March 22	April 12	April 26
WI	101	7.0	13.4	10.4
Dane	65.3	7.6	14.5	10.3
BE/MZ	89.1	6.4	3.2	4.8
WI Heights	NA	2.2	0.0	4.6

Vaccinations



	# Started Series	# Completed Series	% Population w/ at least 1 dose
Wisconsin	2,452,970	1,834,240	42.1%
Dane County	314,838	225,535	57.6%
WHSD Staff	139	139	92.6%
WHSD Students	56	13	37.1%

Athletics -- Capitol Conference Changes



- All coaches and players not currently competing are required to be masked.
- All spectators who cannot maintain 6 feet of physical distancing from other spectators not part of their household or living unit are required to be masked.
- Sport by Sport “Direct Competition” Requirements:
All players not in game are masked
 - Soccer - masks required when ball in play for those on field
 - Golf - masks required on tee box and greens
 - Track -
 - Track Events: masks/facial coverings must be worn until “On Your Mark”
 - Field Events: masks/facial coverings must be worn when social distancing cannot be guaranteed
 - Baseball/Softball--Plate umpire, catcher, batter, base runners all need to be masked. Infielders(includes pitcher) need to mask up when there is a runner on base. Field umpire follows infielder guidelines.

Athletics -- Home Event Information



- Since spring sports typically do not draw large crowds, we will not charge admission or limit attendance (Friday's football game will still limit attendance)
- Fans must remain socially distanced
- Masks are required when social distancing cannot be maintained. They are recommended, but not required if social distancing can be maintained.
- Blue tape indicates where fans can sit in the stands
- Fans may stand along the fence
- Limited student section, socially distanced in the bleachers; students will sign up for the game and be placed on a list
- Pep Band on Friday! Socially distanced and staggered

Food Service



- 4/20/21 - USDA announced a new suite of child nutrition program waivers and flexibilities
- **Extended through June 30, 2022**
 - Continue to provide safe, healthy meals free of charge to children
- Complete breakfast = FREE
- Complete lunch = FREE
- As part of a complete breakfast or lunch, milk is free
 - Milk only is charged a la carte, as USDA reimburses complete meals, not a la carte purchases

What's Next?



1. Ongoing - Feedback cycles with parents, students, families & staff. Evaluate our three critical factors.
2. April 26 - board meeting - updates on first two weeks
3. Planning for 21-22 school year
 - a. Delivery model options
 - b. Assessing learning progress
 - c. Acceleration strategies
 - d. Board communication-post June 14 board meeting
 - i. Group presentation or building by building?
4. June board meeting - SIP updates and PD plans for 21-22